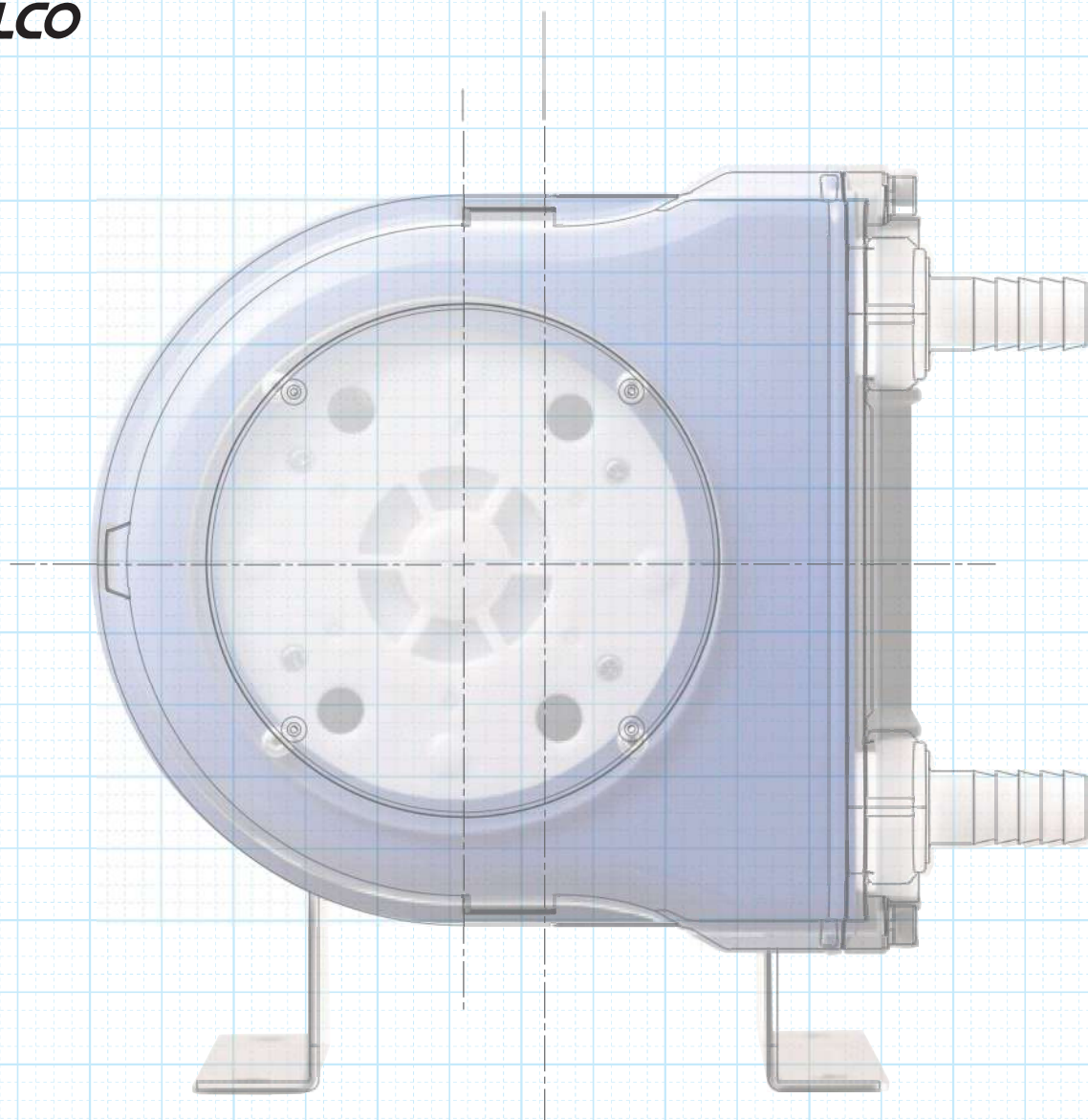


Pump Your Needs.

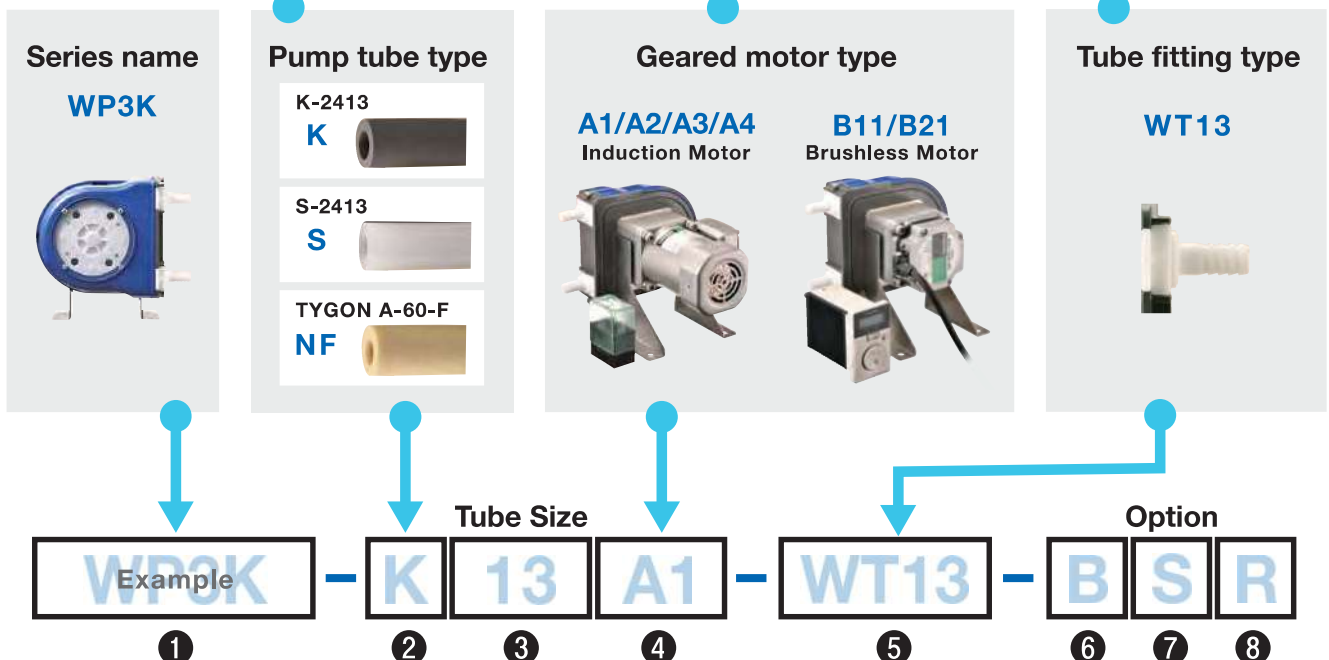
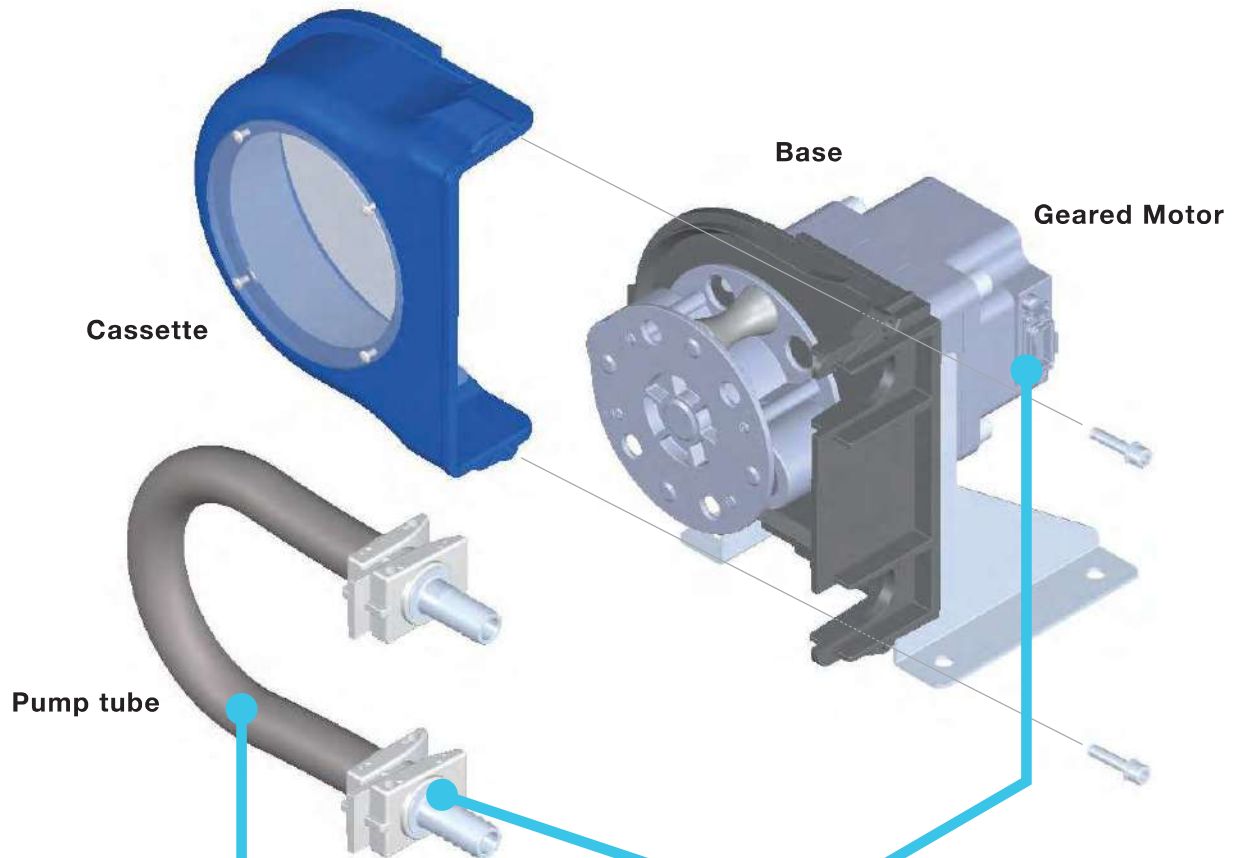


**WELCO's easy ordering system
can match the best product to the customer's needs**

WP3K PERISTALTIC PUMP SELECTION GUIDE

WELCO Peristaltic pumps use a custom ordering system that enables part types and sizes to be selected according to the desired application.




Selection method for customization of pumps
Select the part number according to the following guide



② Pump tube type: Material (Selectable according to fluid type)

③ Pump tube type: Tube size (Selectable according to the tube material and number of rollers)

WP3K - K 13 - - - -

Tube type	Product Description	Regulatory compliance/meets	Tube size ID(mm)
K TUBE K 	"High Performance Industrial Tube" with long service life and good acid and alkali resistant *Material: Olefin based Thermoplastic Elastomers		13
Tygon A-60-F (Norpren A-60-F) NF 	*Food process tube for critical processing applications in the food, dairy and cosmetic industries. *Compatible with virtually all commercial cleaners and sanitizers *Great resistant to general chemicals, acid, alkali and oxidizing agents	FDA 21 CFR Part 177.2600 NSF 51 3-A	13
S TUBE S 	"Long Service Life Silicone Tube" *Material: Olefin based Thermoplastic Elastomers		13

Note: Tygon are manufactured by Saint-Gobain Group.

4 Geared motor types



WP3K - K 13 A1 - - - -
↑

Induction Motor & Gear

Geared motor Specification

Geared motor model		A1		A2		A3		A4	
Operation Voltage	Voltage	1-Phase							
	Hertz	50Hz	60Hz	50Hz	60Hz	50Hz		60Hz	
	Current	1.50A	1.55A	0.73A	0.77A	0.70A		1.44A	
	Inrush Current *1	6.15A	6.50A	2.85A	3.25A	3.40A		7.00A	
Environment Temperature Range		0-50°C (32°F-122°F)				0-40°C (32°F-104°F)			
Liquid Temperature Range		5-50°C (41°F-122°F)							
Ambient Humidity Range		20-80%							
Rotor Speed		166rpm (50Hz)						200rpm	
Flow Rate *2		6L/min (50Hz)						8L/min	
Motor Operating Direction		CW, CCW							
Accessories		Motor capacitor, capacitor cap(AC Power cable is not included)							
Net Weight *3		7.0kg							

*1. Actual Inrush Current may vary depending on operating environment or manufactured LOT.

*2. Flow rate above has been tested under conditions at 20 degree C as operating temperature, 20 degree C as fluid temperature, and no pressure to the pump.

*3. Net Weight above is pump with Stand type

■ Specification of the motor (for detailed spec, please refer to instruction manual)

Securely connect the cables in accordance with the connection examples. Failure to do so may result in fire or electric shock.

Insulation Resistance	100 M Ω or more when 500 VDC megger is applied between the windings and the case after continuous operation under normal ambient temperature and humidity.
Dielectric Strength	Sufficient to withstand 1.5 kV at 50 Hz or 60 Hz applied between the windings and the case for 1 minute after continuous operation under normal ambient temperature and humidity.
Temperature Rise	Temperature rise of windings are 80°C (144°F) or less measured by the resistance change method after rated operation under normal ambient temperature and humidity.

Locked rotor burnout protection

"TP" is stamped on the motor nameplate. The motor has an "auto reset" type thermal protector built into its motor coil.

When the motor reaches a predetermined temperature, the internal thermal protector is activated and the motor is stopped. Always turn the power off before performing inspections.

Thermal protector activation range:

Power is turned off	130 \pm 5°C
Power is turned back	85 \pm 20°C

Caution:

*Current, inrush current, and flow rate above are measured at specific operating conditions.

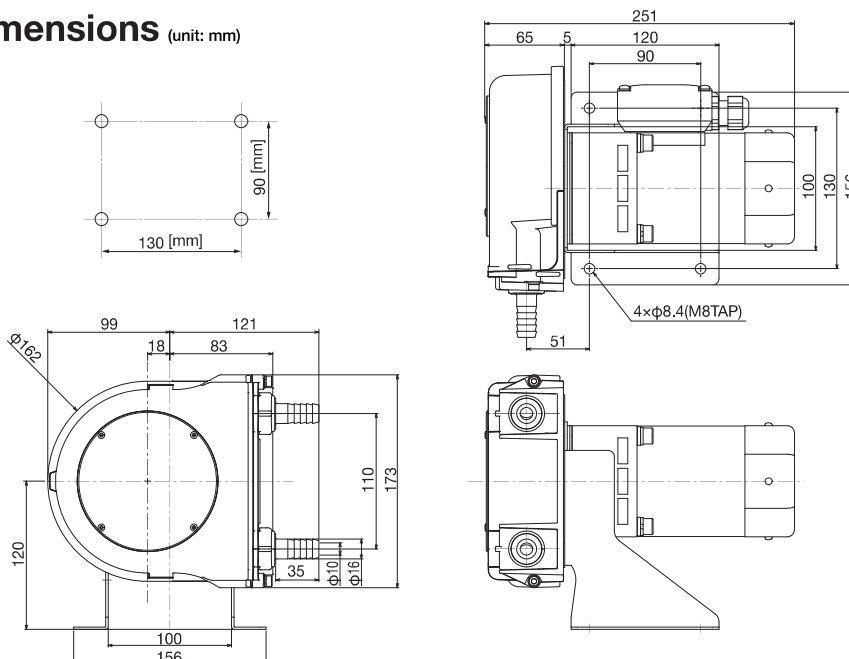
These may vary considerably depending on the tube type, use period, ambient temperature, and lot tolerances. Please use the values as reference and evaluate at your operating conditions for actual ability.

*Do not use the motor beyond its specifications. Doing so may result in electric shock, injury or damage to equipment.

*Do not touch the motor during operation or immediately after stopping. The surface is hot and may cause a skin burn(s).

*Do not lift the motor by holding the motor output shaft or motor lead wires. Doing so may result in injury.

Dimensions (unit: mm)





WP3K - K 13 B11 - - - -
↑

Brushless Motor & Gear

Geared motor model		B11	B21
Operation Voltage	Voltage	1-Phase AC100-120V	1-Phase AC200-240V 3-Phase AC200-240V
	Hertz	50/60Hz	50/60Hz
	Current	3.30A	1-Phase 2.0A/3-Phase 1.1A
	Inrush Current *1	6.80A	1-Phase 4.1A/3-Phase 2.0A
Environment Temperature Range		0-40°C (32°F-104°F)	
Liquid Temperature Range		5-50°C (41°F-122°F)	
Ambient Humidity Range		20-80%	
Rotor Speed		4-200rpm	
Flow Rate *2		Max 8L/min	
Motor Operating Direction		CW, CCW	
Accessories		Driver to Motor Cable (2m) (AC Power cable and signal input cable are not included)	
Net Weight *3		4.4kg	

*1. Actual Inrush Current may vary depending on operating environment or manufactured LOT.

*2. Flow rate above has been tested under conditions at 20 degree C as operating temperature, 20 degree C as fluid temperature, and no pressure to the pump.

*3. Net Weight above is pump with Stand type

■ Specification of the motor (for detailed spec, please refer to instruction manual)

Securely connect the cables in accordance with the connection examples. Failure to do so may result in fire or electric shock.

Power Voltage	1-Phase AC100-120V	Using BMUD120-A2 Driver
	1-Phase AC200-240V / 3-Phase AC200-240V	Using BMUD120-C2 Driver
Rotor Speed	about 4-200rpm	To be selected
Motor Operating Direction	CW,CCW	To be selected

Caution:

*Current, inrush current, and flow rate above are measured at specific operating conditions.

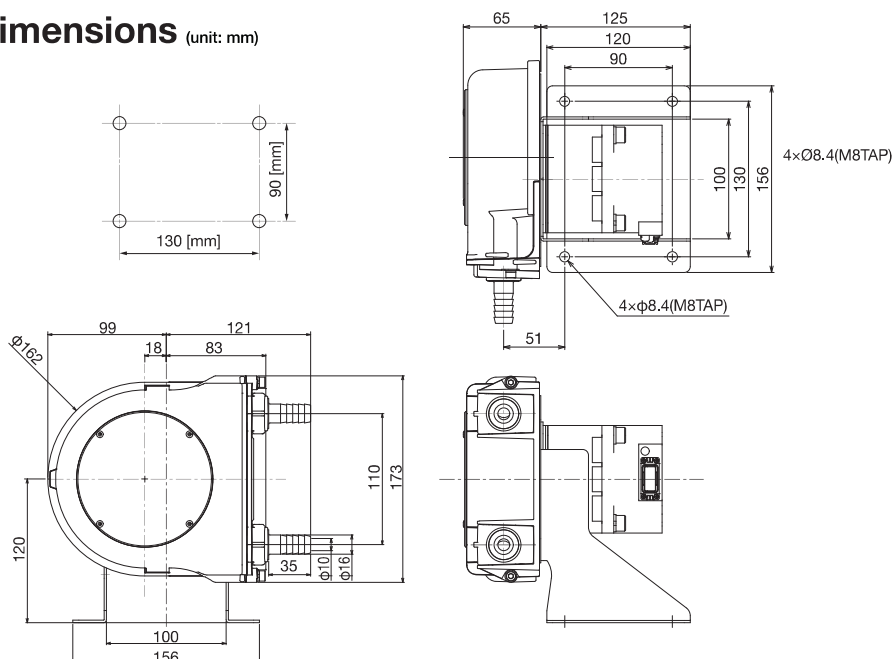
These may vary considerably depending on the tube type, use period, ambient temperature, and lot tolerances. Please use the values as reference and evaluate at your operating conditions for actual ability.

*Do not use the motor beyond its specifications. Doing so may result in electric shock, injury or damage to equipment.

*Do not touch the motor during operation or immediately after stopping. The surface is hot and may cause a skin burn(s).

*Do not lift the motor by holding the motor output shaft or motor lead wires. Doing so may result in injury.

Dimensions (unit: mm)



5 Tube fitting type

WP3K - K 13 B11 - WT13 -



WT13

- Connectable hose sizes 13mm (Note: ID size)

Barbed type.
Inserted directly into hose and used.

6 Color variation

A 5-color lineup that can be classified for use according to the type of liquids used

WP3K - K 13 B11 - WT13 - B



B : Blue(standard)



G : Green*



W : White*



R : Red*



Y : Yellow*

*To be discussed by quantity and condition.

7 Mounting Type

WP3K - K 13 B11 - WT13 - B S



S Stand Type



P Panel Type

8 Pump Head Direction

WP3K - K 13 B11 - WT13 - B S R



R Right





L Left



D Down

General specifications

Recommended installation height	1.5m max
Liquid temperature range	5 to 50°C (41°F to 122°F)
Specified environment temperature range	0 to 50°C (32°F to 122°F)
Specified ambient humidity range	20% to 80% (with no condensation)
Certifications & Approvals	 RoHS  E209254



PeriPump GmbH | Badenerstrasse 816 | CH-8048 Zürich
Tel: +41 43 811 75 02 | contact@peripump.eu | www.peripump.eu

Precautions

1. When selecting a tube, the customer should perform a verification test to verify the chemical suitability according to the usage environment and the intended application.
2. Regardless of the pump tube type, the phenomenon of peeling from inside of the tube starts with small amounts.
3. This product was not designed for medical use. Do not use for medical applications.
4. This product is not waterproof. If using in water-filled environments, design to protect against water.
5. Numerical data listed in this catalog reflect conditions measured over short periods of time. Their accuracy for long-term use is not assured.
6. There is a tendency for the flow rate to increase until the tube becomes acclimated, and even among the same model, different lots may have different flow rates within the specified tolerances. Also, the rotating speed of the DC motor may fluctuate depending on the load conditions and changes in the motor temperature. During the design stage, be sure to select a motor with ample capacity.



WELCO Co., Ltd.

3-3-1 Sumiyoshi-cho, Fuchu-shi, Tokyo 183-0034, Japan Tel: +81-(0)42-333-7320 Fax: +81-(0)42-333-7337

Please see the web site to get more detailed information. <http://www.welco.net>

welco

SEARCH